



30 Church Street



£650 PCM



alsagerlettings@stephensonbrowne.co.uk

15 Crewe Road
Alsager
Stoke-On-Trent
Staffordshire
ST7 2EM

f StephensonBrowneAlsager



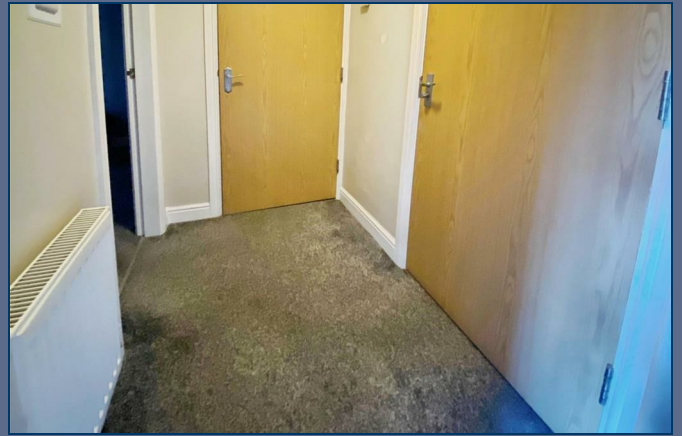
t @sbalsager

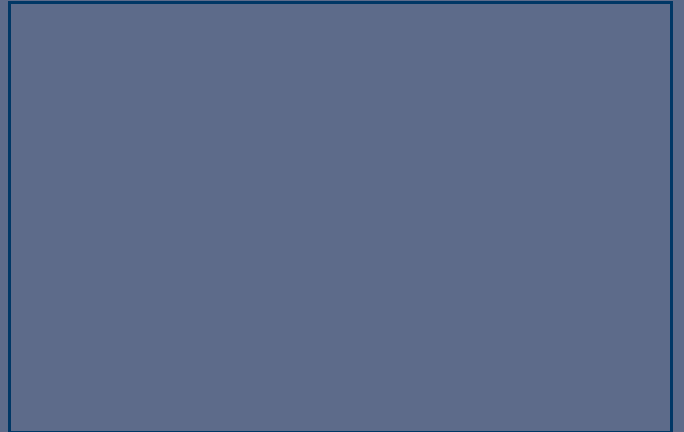
Apartment 1 Mersey Court 30 Church
Street
Stoke- On- Trent, Staffordshire
ST7 1NU

An extremely well presented and well decorated one bedroomed ground floor apartment, located close to the local shops and amenities. Butt Lane is a village situated close to M6, A500 and A34 so provides excellent communication network to both the Potteries and further North.

In brief the accommodation comprises communal entrance hall, lounge with open plan kitchen with built in cooking facilities, bedroom and bathroom with stylish white three piece suite with shower over bath. Please note the communal entrance hall has an electric opening door. Designated parking space. EPC Rating C , Council Tax Band A, Long Term Let. AVAILABLE NOW.

£650 PCM







Stephenson Browne Estate Agents

Newcastle
56 Merrial Street, Newcastle under Lyme
Staffordshire, ST5 2AJ
Tel: 01782 625734

Sandbach
38 High Street, Sandbach
Cheshire, CW11 1AN
Tel: 01270 763200

Alsager
13 Crewe Road, Alsager
Stoke on Trent, ST7 2EW
Tel: 01270 883130

NOT TO SCALE These floor plans are given as a guide only. Full completed measurements and details should be verified by any intending purchasers legal representative.

NOTICE: Stephenson Browne for themselves and for the vendors or lessors of this property whose agents they are give notice that: (1) the particulars are set out as a general guideline only for the guidance of intending purchasers or lessees, and do not constitute, nor constitute part of, an offer or contract; (2) all descriptions, dimensions, references to condition and necessary permissions for use and occupation, and other details are given in good faith and are believed to be correct but any intending purchasers or tenants should not rely on them as statements or representations of fact but must satisfy themselves by inspection or otherwise as to the correctness of each theme; (3) no person in the employment of Stephenson Browne has any authority to make representation or warranty whatever in relation to this property. (4) fixtures & fittings are subject to a formal list supplied by the vendors solicitors.